

DESIGN BY  
MICHELA GERLO

**Descrizione**  
Description

**Dimensioni**  
Dimensions

**Troppo pieno**  
Overflow

**Complementi**  
Complements

**Accessori**  
Accessories

**Materiali**  
Material

**Peso netto**  
Net weight

**Peso lordo**  
Gross weight

**Imballo**  
Packing dimension

**COD. INCLIF4085T**

Lavabo da terra in marmo con scarico a **terra** completo di piletta con scarico libero  
*Freestanding marble washbasin for FLOOR DRAIN*

40x40x85 cm

NO

cod: 83095 serie Tolomeo - Rubinetterie Fratelli Frattini

Sifone e raccordi non inclusi  
*Trap and pipe fitting not included*

Marmo bianco / ardesia  
*White marble / Black Slate*

93 Kg

97 Kg

pallet 80x120x70 cm

**COD. INCLIF4085P**

Lavabo da terra in marmo con scarico a **parete** completo di piletta con scarico libero  
*Freestanding marble washbasin for WALL DRAIN*

40x40x85 cm

NO

cod: 83034 serie Tolomeo - Rubinetterie Fratelli Frattini

Sifone e raccordi non inclusi  
*Trap and pipe fitting not included*

Marmo bianco / ardesia  
*White marble / Black Slate*

93 Kg

97 Kg

pallet 80x120x70 cm

**IN DOTAZIONE / INCLUDING:**

Piletta gattinara 1" 1/4

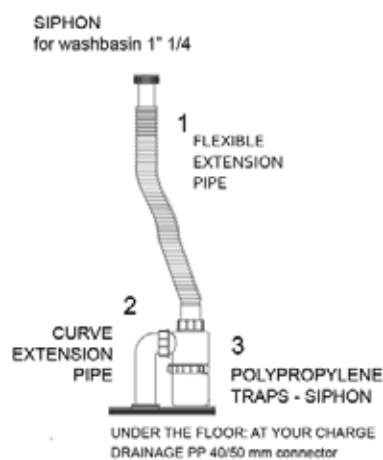
Gattinara drain 1" 1/4

**OPTIONAL:**

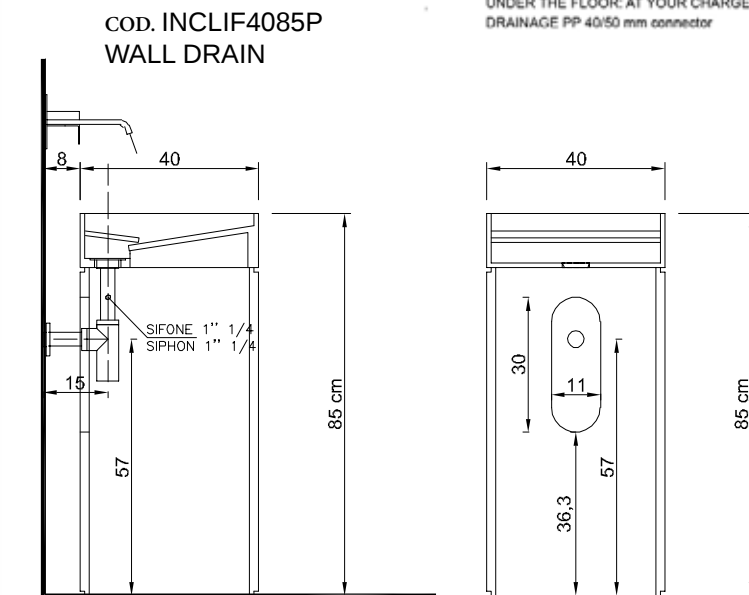
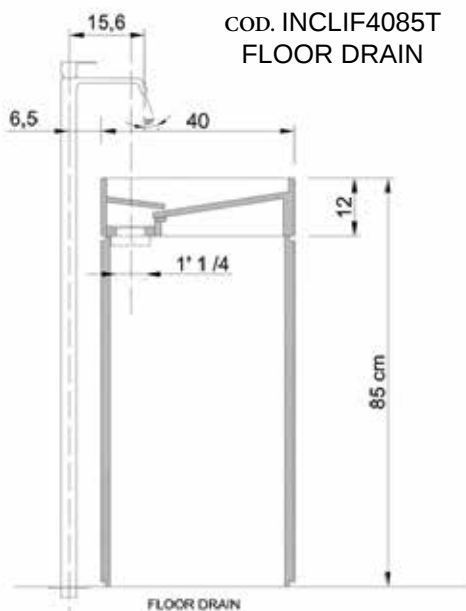
INCLIF4085T - TRAP

Sifone flessibile in polipropilene per scarico a pavimento di lavabo a libera installazione (1"1/4)

Polypropylene traps with flexible pipe for floor drain for freestanding washbasin (1"1/4)



—  
D



**PULIZIA/CLEANING:**  
USARE PRODOTTI NEUTRI,  
NON USARE PRODOTTI  
A BASE ACIDA O ALCALINA.  
USE ONLY NEUTRAL PRODUCTS  
WITHOUT ALKALINE OR ACIDIC  
SOLUTIONS.

Filodesign suggest:  
FILA CLEANER to maintenance  
[www.filasolutions.com](http://www.filasolutions.com)